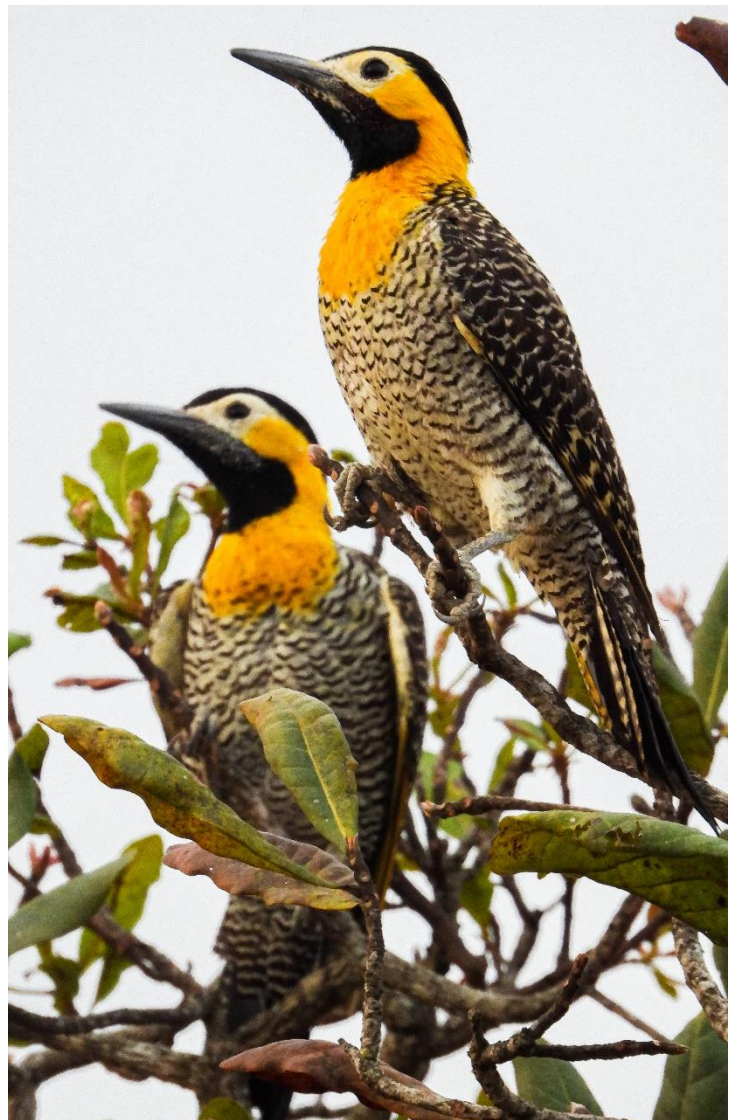




About the Brazilian Pantanal & Cerrado...

Brazil is an immense country with several different ecosystems. This tour is mainly focused on two of the richest habitats in the American continent. For 13 days we will look for a wide variety of mammals, birds, reptiles and amphibians at the Brazilian Pantanal –the world's largest wetland, and the Cerrado scrubland.

Covering roughly 142,500 sq. kilometers, the Pantanal is about the size of the state of Georgia in the USA. Located in the middle of South America, Pantanal mostly spreads within the Brazilian territory, but part of it penetrates neighboring Bolivia and Paraguay. The lowland plains are characterized by pronounced wet and dry seasons. Habitats range from semi-deciduous and evergreen forests to palm woodlands and true Pantanal (seasonally flooded grasslands with scattered clumps of Cerrado scrubland on elevated patches of land). An enormous number of lakes and rivers dot and cross the region, constantly cleansing and renewing the wetlands. Pantanal is considered the best and easiest place in South America to get in touch with the most incredible and diverse array of Neotropical wildlife. Wide-open areas facilitate the spotting of animals such as the rare Brazilian Tapir, Marsh Deer, Giant Anteater, Capybara, Black-and-gold Howler-Monkey, Yellow Anaconda, Ocelot, Margay and Jaguar. While this impressive cat



occurs over a wide range, the Pantanal is the only place where chances of seeing a Jaguar are not just reasonable, but quite high.

While mammals are impressive, it is the amazing abundance of birds that gives Pantanal its fame. It is a destination for three major South American migratory routes. The shrinking of vast flooded areas at the beginning of the dry season, concentrates fish for waders such as Jabiru, Maguari and Wood Storks, Great and Snowy Egret, numerous herons, five species of ibis and Roseate Spoonbills. Four species of kingfishers, Snail Kite, Black-collared and Roadside Hawks and several other raptor species, many parrots, parakeets and macaws and an array of other interesting birds make of this a top destination for bird watchers the world over. Bird abundance, diversity and ease of observation are equally a bonus for all sorts of visitors; from experienced birders to first time nature-tour participants.

The Cerrado, or *Campo Cerrado*, with its very characteristic vegetation, corresponds to the arboreal savanna of other tropical continents. It spreads over an area of more than 2 million square kilometers, taking in 23.5 % of Brazil's territory. This habitat covers most of Brazil's west-central region, stretching way into Paraguay.

Sparsely scattered low trees and bushes with twisted branches, thick grooved bark, and leathery leaves give shape to this distinctive woodland. Reddish-colored termite nests are prominent on the trunks and these are a great attraction to nesting Campo Flicker and Peach-fronted Parakeet, who tunnel into their depths. The bird specialties include Stripe-tailed Yellow-Finch, White-rumped and White-banded tanagers, Coal-crested Finch, Red-legged Seriema, Red-winged Tinamou, Yellow-faced Parrot, the secretive Collared Crescentchest and the endemic Rufous-winged Antshrike.

Narrow riverine forests along the numerous streams in this part of Brazil hold unique birds, like Dot-eared Coquette, Cinnamon-throated Hermit, Blue-winged, Red-shouldered and Red-and-Green Macaws to name but a few.



17 Oct – 2022 / Day 1. Arrival to Sao Paulo, Brazil

This day you will be arriving to Sao Paulo, hotel of arrival is not included but we recommended highly Panamby Hotel (<https://panamby.com.br/>); you can take the shuttle bus or to take a taxi to the hotel. Services for this day are not include, please if you have any question about the logistics for this day, write us.

18 Oct – 2022 / Day 2. São Paulo to Itatiaia National Park

Our tour starts in São Paulo from where we drive to the famous Itatiaia National Park. The reserve covers over 300 km² and is one of the best-known birding sites in southeast Brazil with pristine Atlantic Forest ranging from 700m up to 2800m in elevation. Within the park close to 400 species of birds have been recorded including over 50 Atlantic Forest endemics. Our lodge is located at mid-elevation inside the National Park. In the afternoon we will bird the lodge grounds and surroundings to look for mixed species-flocks and specialties. Top birds that we might run into on our very first afternoon include Saffron Toucanet, Green-billed Toucan, Surucua Trogon, Maroon-bellied Parakeet, Dusky-legged Guan, Yellow-legged Thrush, Green-headed, Brazilian Tanager, Rufous-capped Motmot and Blue Manakin.

Night in Hotel do Ypé / <https://www.instagram.com/hoteldoypeoficial/>

19 Oct – 2022 / Day 3. Itatiaia National Park

Today we have a full day of birding at the lower and mid-elevations of Itatiaia National Park. But before this we will spend some time with some of the birds coming at the hotel feeders. Our hotel has a balcony at its breakfast place were species like Saffron Toucanet, Chestnut-bellied Euphonia, Magpie, Black-goggled, Green-olive, Green headed, Golden-chevroned, Ruby-crowned Tanager, Brazilian Ruby, Black Jacobin, Scale-throated Hermit, Violet-capped Woodnymph, Versicolored Emerald, Whitethroated Hummingbirds are possible to see. We will visit several different sites and trails in order to get as many specialties as possible. Understory birds that we will look for include Star-throated Antwren, White-shouldered Fire-eye, White-throated Spadebill, Greenish Schiffornis and Serra do Mar Tyrant-manakin to mention but a few. Some of the forest dwellers can be tough to see but we will certainly try for goodies like Cryptic Antthrush, Speckle-breasted Antpitta and Rufous Gnateater. Mixed-species flocks with Spot-breasted Antwren, Streak-capped Antwren, Pallid Spinetail, Buff-browed and White-collared Foliage-gleaner, Planalto Woodcreeper, Rough-legged Tyrannulet, Yellow-lored Tody-flycatcher, Rufous-crowned Greenlet, Gilt-edged Tanager, , and many more, will be looked for carefully. Bamboo specialists in the area, of which some nomadic, include Ferruginous and Ochre-rumped Antbird, Large-headed Flatbill and Uniform Finch. After dusk we will look for the stunning Tawny-browed Owl or anything else that we might find

Night in Hotel do Ypé / <https://www.instagram.com/hoteldoypeoficial/>



20 Oct – 2022 / Day 4. Itatiaia National Park

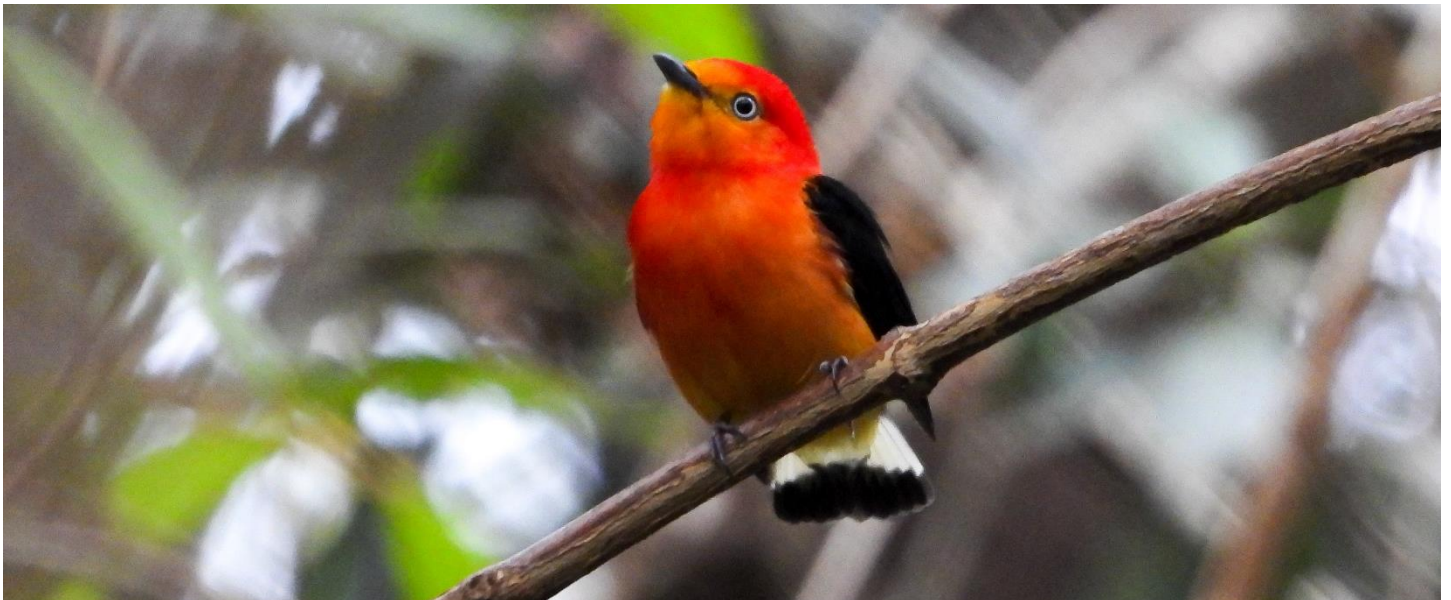
Today we have an early start as we will drive to the higher parts of Itatiaia National Park. We will bird the well-known Agulhas Negras road and make our way up to 2,400 m in elevation. Target species that we will seek for in mixed-species flocks include Black-capped Piprites, Rufous-backed Antwreio, Thick-billed Saltator, Red-rumped and Bay-chested Warbling-finch, Diademed and Brassy-breasted Tanager, White-rimmed Warbler, Serra do Mar Tyrannulet and the scarce Sharp-billed Treehunter. Black-and-Gold Cotinga is a rare and localized endemic that we will try to find by its characteristic high pitched whistle. Long-tailed Antshrike, Rufous-tailed Antthrush, Speckle-breasted Antpitta and Rufous-tailed Antbird are some of the tougher understory skulkers we might get. Higher up in the more open and scrubby habitat we will seek for endemics like the localized Itatiaia Spinetail and Green-crowned Plovercrest. Some of the neat tyrant flycatchers that we might encounter along the Agulhas Negras road include Shear-tailed Tyrant, Blue-billed and Velvety Black-tyrant. After a full day of birding we will try to get back in time for dinner at our lodge.

Night in Hotel do Ypé / <https://www.instagram.com/hoteldoypeoficial/>

21 Oct – 2022 / Day 5. Itatiaia National Park to SP and Flight to Cuiaba

We will drive this morning to São Paulo to take our flight to the capital city of the state of Mato Grosso: Cuiabá. Once landed, we will drive to the nearby and beautiful Chapada dos Guimaraes. This small town, situated at an elevation of 800 m above the sea level, holds areas of Cerrado habitat where some bird specialties can be found. We will explore it for two and a half days enjoying birds and the beautiful scenery created by the red-sandstone cliffs that are part of the geography of the city and its surroundings. The road from Cuiabá to Chapadas is one of the best for birding, and there will be lots of photo opportunities for the most spectacular landscapes in this part of Brazil. Chapada dos Guimaraes is a region of seasonally dry woodland-savanna interspersed with spectacular cliff drop-offs and waterfalls. We will spend a lot of time birding the surrounds, including forested sections that allow us chances to observe such wonderful birds like the colourful Band-tailed and Fiery-capped Manakins, the endearing Southern Antpipit, Tataupa Tinamou, Sharp-tailed Streamcreeper (which we may locate by its striking calls), Streaked Xenops, Sepia-capped Flycatcher and the eye-catching Pectoral Sparrow.

Night in Pousada Dos Ventos / <https://www.instagram.com/pousadavalledosventos/>

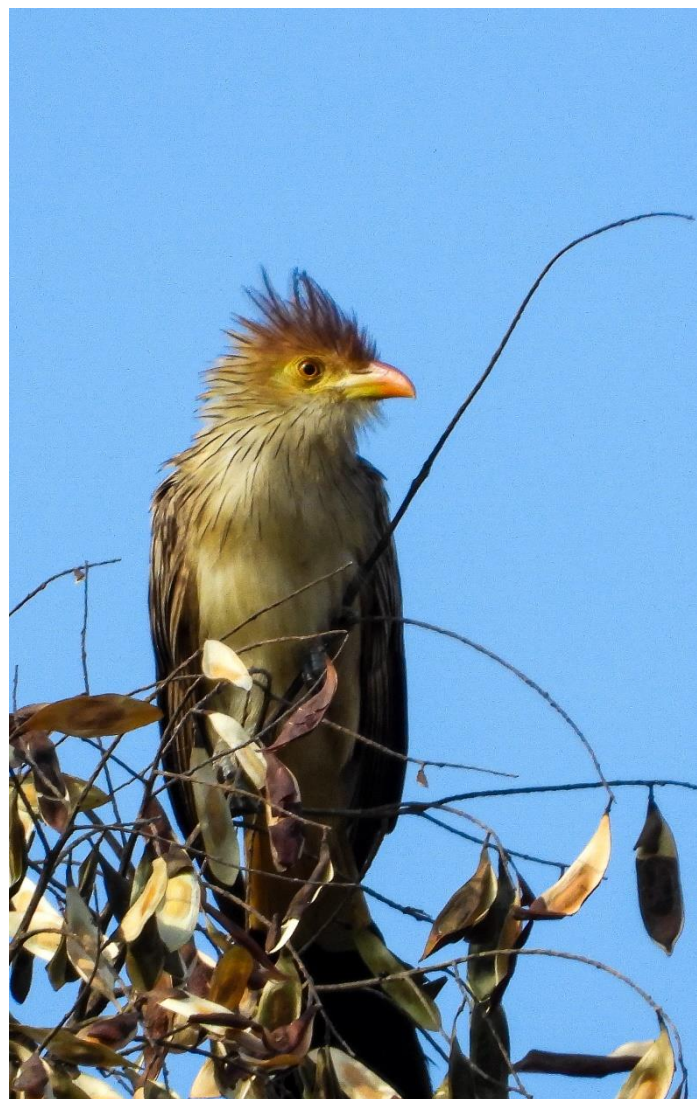


22-23 Oct – 2022 / Day 6-7. Chapada dos Guimarães.

We will spend these two days exploring this stunning area. The raucous calls of Blue-winged Macaws and Blue-headed Parrots might welcome us to the scenic Veú de Noiva Waterfall, where Swallow Tanager, the scarce Blue Finch (Yellow-billed Blue-Finch) and Bat Falcon also occur. In a nearby forested area we'll search for Euler's Flycatcher, the often vocal White-backed Fire-eye, Yellow-tufted Woodpecker, White Woodpecker, Ornate Hawk-Eagle calling overhead and the tricky Russet-crowned Crane, with an outside possibility of both Pheasant and Pavonine Cuckoos and Guira Cuckoo. In the

more open and thorny habitat we may find the localized Chapada Flycatcher, Collared Crescentchest, Rufous-sided Pygmy Tyrant, Rufous-winged Antshrike, Shrike-like and White-rumped Tanagers, Small-billed Tinamou, Grey-chested Cacholote, Sooty-fronted Spinetail, the delightful Coal-crested and Red Pileated Finches, Black-throated Saltator and perhaps even the sleek Horned Sungem.

Night in Pousada Dos Ventos / <https://www.instagram.com/pousadavalledosventos/>



24 Oct – 2022 / Day 8. Chapada dos Guimarães to Pantanal.

After a final morning exploring the area of Chapadas, we will set off for the Pantanal. The first part of the road will be all paved until the small village of Poconé, the last village before entering the Transpantaneira, which is the only road across northern Pantanal. From Poconé we will continue 30 km on dirt along the Transpantaneira birding on-route to finally reach our lodge and check in for the following two nights.

Night in Pouso Alegre Lodge / http://pousalegre.com.br/pousada_e.htm

25 Oct – 2022 / Day 9. Northern Pantanal, Pouso Alegre. Morning boat trip at Rio Claro

The first morning we will take a boat ride to try for the spectacular Giant River Otter, of which a family lives not far from our lodge. The rest of the day is to be spent exploring the northernmost section of the Transpantaneira, which is somehow drier and quite different in terms of wildlife than its southern section, next to the Cuiabá River. We expect to find a wide variety of localized birds here including for instance Red-legged Seriema, Chestnut-bellied Guan, Sungrebe, Sunbittern, Long-tailed Ground-Dove and Red-winged Tinamou, all difficult or unlikely seen in the Cuiabá River area. Mammals are quite widespread at the Pantanal, but

given the open savanna-like vegetation of this particular area, species like Brazilian Tapir, White-lipped Peccary and Marsh Deer are easier to spot here than further to the south. Chances for mammals like South American Coati, Brown Capuchin, Crab-eating Fox, Bare-eared Marmoset and Crab-eating Raccoon are also quite high.

Night in Pouso Alegre Lodge or similar / http://pousalegre.com.br/pousada_e.htm

26 Oct – 2022 / Day 10. Transfer to Porto Jofre. Lunch at Pixaim

We will wake up early this morning, to the sounds of birds and Black-and-gold Howler Monkeys roaring at the distance and go for a pre-breakfast birding walk in the surroundings of our lodge. After breakfast we will set off and drive south along the Transpantaneira, all the way to the Porto Jofre area, where we'll spend the following three nights. We'll make several birding and photo stops as we drive through, and also to enjoy Pantanal's vibrant wildlife. Birds like Campo Oriole, Blue-fronted Parrot, White Woodpecker, Greater Thornbird, Grey-crested Cacholote, Pygmy Kingfisher, Ashy-headed Greenlet and Buff-bellied Hermit are all present here, so we will look for them and for many others during our frequent stops. One of Pantanal's most wanted to see bird species is, by far, the Hyacinth Macaw, a common sighting along the way. As we enter into the richest lower area of the Transpantaneira, plant and animal diversity increases. Herds of Capybara, the world's largest rodent, are likely to be seen very often, Pantanal Cayman dwells in every stream and pond at the roadsides, and we might even come

across some remarkable reptiles, like the huge and colorful Yellow Anaconda. We expect to arrive to our lodge in the early evening.

Night in Porto Jofre Hotel / <http://portojoFRE.com.br/es/#about-us>



27 Oct – 2022 / Days 11. Pantanal – Porto Jofre and Cuiabá River.

We will spend two full days exploring the Porto Jofre – Southern Transpantaneira area, searching for mammals, Birding and enjoying local wildlife. Our main goal here is to look for Jaguars, and this is the main reason why we are spending quite a long time in this particular spot. The Brazilian government has decided to protect the local Jaguar population, so sightings of this striking cat have suddenly become fairly regular in the last few years. From our lodge at the Porto Jofre area we will have the chance to make four half day boat trips along the Cuiabá River, and get to some isolated areas where Jaguars are frequent. Most sightings are made from the boat, and the animals normally offer good

photo opportunities, like the one in the image on the front page of this tour itinerary. The boat tours also offer excellent chances for other mammals and, of course, for a diverse arrange of colorful birds. We will also have more chances for Giant Otter, and capybaras will be a constant sighting on the riverbanks.

Night in Porto Jofre Hotel or similar / <http://portojoFRE.com.br/es/#about-us>



28 Oct – 2022 / Day 12. Pantanal - Pixaim River.

After a leisurely breakfast, we will bird around Porto Jofre area looking for some of the birds we've missed and then start driving back to the Northern Transpantaneira area birding on-route. Reaching the Pixaim river we will enjoy the birds at the feeders like the Toco Toucan, Palm Tanager, Grayish Saltator, Orange-backed Troupial, Chestnut Eared Aracari, Purplish Jay and many more. We will be staying in a hotel where the wildlife along the river and photographic opportunities are exceptional. Later that evening we will bird along the Transpantaneira and at night we will go out for

a spot lighting session looking for some of the possible mammals to be found in this area and some night birds like Spot-tailed, Little Nightjar and Pauraque.

Night in Mato Grosso Pantanal Hotel

<https://hotelmt.com.br/pantanal-mato-grosso-hotel/>



Antwren, Upland Sandpiper to mention but a few.

Night in Pusada Piuval <https://pousadapiuval.com.br/>

30 Oct – 2022 / Day 14. Pantanal - Piuval

The area surrounding the lodge will provide us with an amazing opportunity to view certain species that we might not encounter anywhere else on the tour. Most of our day will be spent driving or walking the lodge surroundings and the access road in search of species that might include Great Rufous Woodcreeper, Cream-coloured and Pale-crested Woodpeckers, Red-billed Scythebill, Orange-winged Parrot, Hyacinth Macaw and Yellow-chevroned and Peach-fronted Parakeets. As we drive through the surrounding plains we might come across the threatened Chestnut-bellied Guan, smart looking Red-throated Piping Guans, elegant Red-legged Seriemas, and Greater Rheas – South America's version of Africa's Ostrich. Mammals common in this area include Azara's Agouty, and both Black Howler and Capuchin Monkeys.

Night in Pusada Piuval <https://pousadapiuval.com.br/>

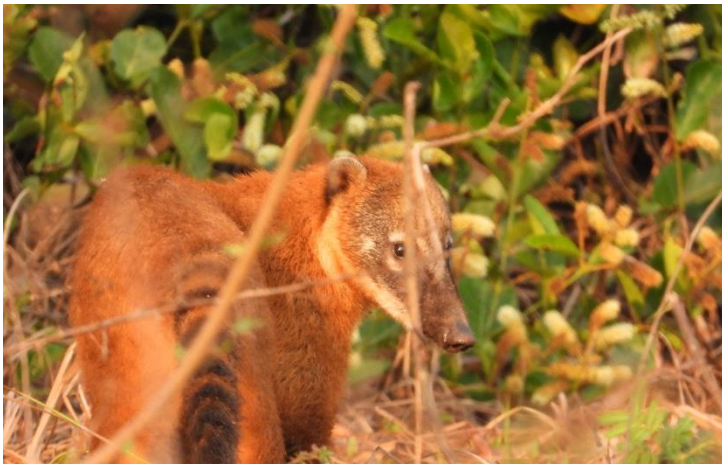
31 Oct – 2022 / Day 15. Pantanal To Cuiabá, Flight to Sao Paulo / flight to home

If possible, we will do some birding in the morning and then we will drive to Cuiaba City airport, where you'll bid farewell to local leader and the tour ends.

Night in Sao Paulo Not Included

29 Oct – 2022 / Day 13. Pixaim River To Piuval

We take to the river on the first of our boat trips. It is just a few meters from our hotel to the river, so it shall be a very relaxed start to the day as we go in search of some close up views of the Pantanal's wildlife. Our targets include all five of the kingfishers found in South America: Ringed, Amazon, Green, Green-and-Rufous, and Pygmy. We also hope to find Sungrebe and the truly stunning Sunbittern, elusive but impressive Agami Heron, and if we are really lucky, very elusive Zig-Zag Heron. Of course mammals play a big part in our boat trip too, with huge Giant River Otter being a key species that we hope to see. Not forgetting reptiles of course; Pantanal Caimans will literally be everywhere! Once back on dry land we should have time for a quick look around the grounds where we could find Helmeted Manakin, Red-billed Scythebill, and both Pale-crested and Golden-green Woodpeckers. After our morning activities we will depart to a lodge in Km 10 of the Transpantaneira. In the afternoon we bird the grounds of this big ranch with its different habitats looking for birds like Golden-collared Macaw, White-wedged Piculet, Black-bellied



Price 2022

4 Pax: \$ 5.940 USD – Net Price Per Person

5 Pax: \$ 5.250 USD – Net Price Per Person

6 Pax: \$ 4.710 USD – Net Price Per Person

7 Pax: \$ 4.510 USD – Net Price Per Person

8 Pax: \$ 4.240 USD – Net Price Per Person

9 Pax: \$ 4.050 USD – Net Price Per Person

10 Pax: \$ 3.880 USD – Net Price Per Person

Single Room Supplement: \$ 560 USD

What is included?

Main Tour

- 2 Full time Manakin Nature Tours English-speaking birding/naturalist leaders from arriving day 1 until departure on day 14.
- Private transportation for all transfers and excursions.
- Domestic Flight Sao Paulo – Cuiaba – Sao Paulo
- Accommodations on DBL/ SGL room basis with breakfast included. All rooms en-suite.
- All lunches, boxed-lunches and dinners from Lunch on day 1 until Breakfast on day 14 of the tour. No drinks included.
- Admission fees to all national parks and nature reserves.
- Local guides where required by law.
- Drinkable water on board the vehicles while on tour.
- 01 Boat trip (2 hours) at Rio Claro on day 5
- 02 full days navigation at Porto Jofre for Jaguar searching on days 7 & 8.

- 01 navigation (02 hours) at Pixaim river on day 10.
- Manakin Nature Tours leaders expenses.

Is not included!

- International airfares and airport taxes.
- Personal travel and medical insurance.
- Beverages
- Tips of any kind
- Anything not stated on "Included services".

